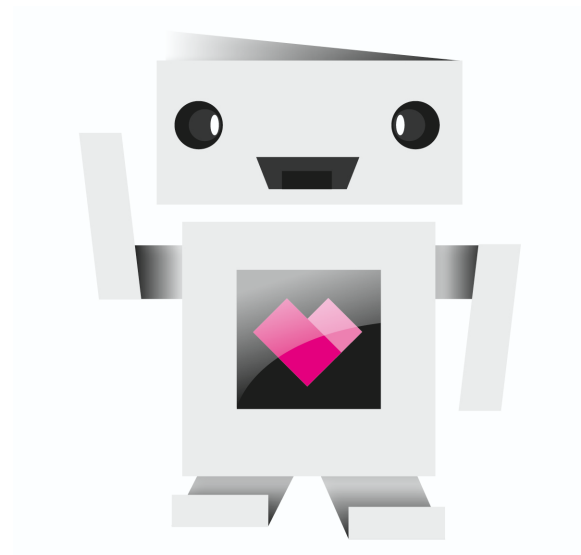


International Handbook

-by LinTek



Welcome to Linköping University!

Welcome to Linköping University! We are the student Union LinTek. LinTek stands for Linköpings Teknologers Studentkår and is the student union representing students at the Faculty of Science and Engineering at LiU. A student union works much like a labour union and works towards high-quality education, a good work environment and strengthened student influence. In addition to this, LinTek also organises career development activities and various social events.

We are welcoming you to our university and hope that your time here will be really good. To make your settlement easier, we have put together a handbook with a mix of information. We hope that you will find it useful and that you will soon be a part of the student life at Linköping University!



Table of Contents

Welcome to Linköping University!	2
LinTek	6
Who are we?	7
How to Register for a membership in LinTek	8
What we do	9
Student Influence	9
Education	9
Working environment	10
Equal opportunities	10
Career fair, LARM	11
Connections between companies and students	11
Getting started	11
Housing and Accommodation	11
KOMBO	12
Studying at Linköping University	12
Study Guidance at the Faculty of Science and Engineering	12
International Office and LiTH International	12
Life at campus	13
Finding your way	13
Lunchtime	13
Studying at Campus	13
BokAB: Purchasing course literature	14
Transportation to and from campus	14
By Foot	15

By Bike	15
By Public Transportation	16
Campusbussen	16
Popular and useful locations	17
In Linköping	17
Kårallen	17
Baljan	17
Unicrew	17
Studenthuset	17
Byttan	17
LiU Student Second Hand	18
Flamman	18
VilleValla	18
Kårhuset Kollektivet	19
Örat	19
Ryds Herrgård [hg]	19
In Norrköping	20
Trappan	20
Studentfiket	20
Pub Vattentornet	20
Student Life	20
The Chapters of the Faculty of Science and Engineering	20
The Overalls, “ovve”	22
Student associations	23
Erasmus Student Network	23
East Asian Association (EAA)	24

ISA - International Student Association	24
ISO - Indian Students Organization	24
Health and Wellbeing	25
Student Health	25
Alcohol in Sweden	25
Smoking	25
Other good info	26
Useful contact information	27

LinTek

LinTek is the student Union at Linköpings University (LiU). LinTek stands for Linköpings Teknologers Studentkår and represents students at the Faculty of Science and Engineering at LiU. Aside from LinTek there are two other student unions at LiU; Consensus for the students of the Faculty of Medicine and Health Sciences and StuFF represents the students of the Faculty of Arts and Sciences as well as the Faculty of Educational Sciences.

This chapter describes our organisation, who we are, what we do, how we can help you and what you can expect from us during your year.



Who are we?

LinTek is driven by students who either work full-time or half-time parallel to their studies during one year. To work full time, the students take a gap year. Hence, the organisation is maintained by students who want to facilitate and improve the life of other students, you included.



The Union Management team currently working at LinTek. Come and say hi to us at our office in Kårallen!

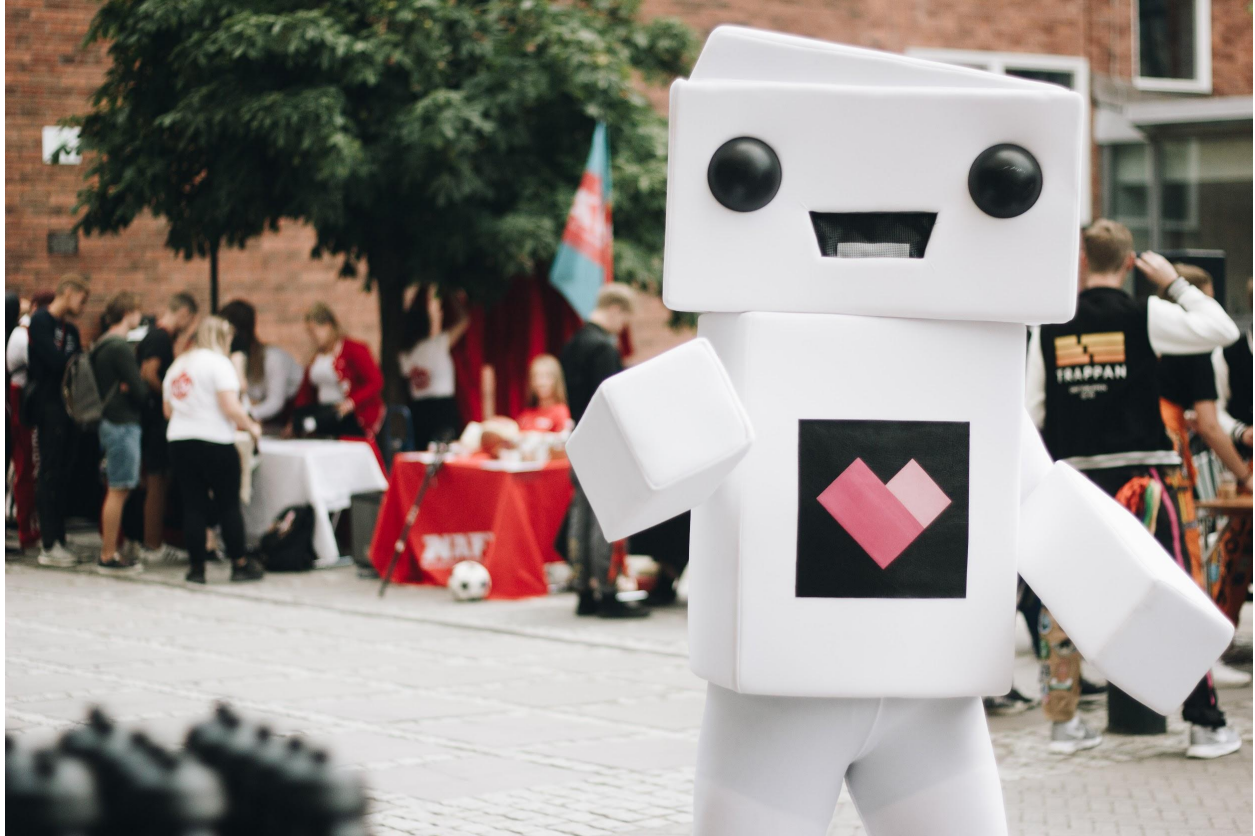
If you want to know more about us and our union, check out our website: [LinTek](#) or follow us on our social media sites listed below.

Contact

Website in english: [LinTek](#)

Facebook: [LinTek - Linköpings teknologers studentkår](#)

Instagram: [@lintek_liu](#)



Our own mascot, the robot Linus, who likes to walk around on one of our campuses.

How to Register for a membership in LinTek

The fee to be a member of LinTek is 150/year or 100/semester. To sign up for a membership, the easiest is to go to [LinTek's website](#) and use your newly acquired Swedish personal identity number together with your LiU login credentials. If you find that you need help or have any questions, come to our office on the third floor in Kårallen and knock on any of the black doors with our logo on. Alternatively, send an email to international@lintek.liu.se.

There are multiple benefits of being a member in LinTek including:

- Discounts at parties and food in the union houses.
- Priority to some events by LinTek Näringsliv (LinTek's business relations group) and to pre-LARM (events leading up to LinTek's career fair).
- Discounts at LinTek's bookstore, BokAB
- Priority to be a host at LinTek's career fair.

Note that you don't have to be a member to participate on our events or be represented by us.

What we do

Student Influence

As a student at Linköping University, you have great opportunities to influence your education and working environment. Students are represented in most university groups and have a say on the decisions they make. The student union is responsible for appointing student representatives, so if you are interested in hearing more about it, contact ua@lintek.liu.se.



Education

Students are represented in the groups that plan the programmes and make decisions about the courses. The decisions can be about how a course can be examined, in what order students take courses in a programme or what courses should be taught. As a programme student, you are represented by a student from the student chapter you are assigned to. Contact your student chapter if you have questions or opinions about your specific education. As an exchange student, you can directly write to Lintek for your questions or opinions using the mail address:

international@lintek.liu.se.

Another method to influence your education is by filling in course evaluations. After each course, an evaluation form called Evaluate is sent by email to all students taking the course. By answering it, you can make your voice heard and improve the course. Better courses can lead to an improved program with a better reputation, making you more attractive to employers.

Working environment

Working environment refers to your physical, organisational, and social conditions. The physical work environment pertains to issues with the buildings and environments that are used for educational purposes, while the organisational and social work environment pertains to risks that may affect the mental and physical health. This concerns both social issues and work organisation, as long as it is related to your education.

As a student it is important that you can influence your work environment. The student union has a central working environment representative, who you can contact by emailing camo@lintek.liu.se if you have any questions regarding your work environment or rights.

Every chapter also has at least one working environment representative, who actively works with the work environment for the members of the chapter. If you have any concerns about your work environment, you can contact them.

Equal opportunities

Equal opportunities is LiU's umbrella term for the work to promote equal rights, opportunities and obligations. That includes to counteract all forms of discrimination, harassment, sexual harassment, victimisation and exclusion.

If you have been subjected to offensive treatment you can contact your student chapter or the central working environment representative at the student union for advice on what to do next. You can find more information on the student intranet.

Contact

Central working environment representative for students: camo@lintek.liu.se

Career fair, LARM

One of the biggest events that we organise is the career fair, LARM. It usually takes place in the middle of February every year (14th of February 2023).

During this day, students get a chance to meet and connect with representatives from large and small, local, and international companies. Maybe you will meet a potential employer or future boss there!



LARM will take place in the beginning of February on Campus Valla. Check out their [website](#) for more information.

Connections between companies and students

LinTek also organises several occasions for students to meet companies. This can be through recruitment fairs, CV-workshops or organising After Works with companies. In charge of those events is LinTek Näringsliv. The majority of the events are in english or can be adapted to english. See more of Näringsliv's work on their social media sites:

Contact

Facebook: [LinTek Näringsliv](#)

Instagram: [@lintek_naringsliv](#)

Getting started

Finding somewhere to live is not always easy. We have tried to summarise some housing agencies and organisations that can help you get started.

Housing and Accommodation

Linköping University has a [page](#) that describes how to find accommodation in Linköping and Norrköping.

Most housing agencies in Sweden function with a housing queue, where the one who signed up for the queue first will have priority when applying for apartments. Therefore, we suggest that you sign up for housing as early as possible on [studentbostäder.se](#), [Byggvesta](#) and [Heimstaden](#) if you will be studying primarily in Linköping. If you are a student studying in Norrköping, you can sign up for housing at [studentbo](#).

KOMBO

KOMBO is the students' tenant association, run by Kårservice. Their services are free for all students at Linköping University. They help you negotiate rents and other conditions for the tenants with different accommodation associations, for example at Studentbostäder i Linköping AB, ByggVesta, Heimstaden and Studentbo i Norrköping AB. This means that KOMBO can represent you in negotiations concerning the state of student accommodation, rent and much more. If you need legal advice or help finding housing, KOMBO can give you guidance. More information can be found on their website.

Contact

Website: [KOMBO](#)

Studying at Linköping University

Since LiU created the intranet, you have to log in to see some of the information. Make sure to log in with your liu-adress before you click the following links.

Study Guidance at the Faculty of Science and Engineering

If you are studying your masters at LiU, the Study Guidance can help you with study-related tasks like change of courses or creating an individual study plan. Every master program has a specific study guidance counsellor, and you can find yours on the student intranet. Exchange students can contact them by email for study related questions.

Contact

Intranet page: [Study guidance at the Faculty of Science and Engineering](#)

International Office and LiTH International

The International Office works with international questions on the university level and is a resource for all incoming students, especially at the beginning of your time here at LiU. They have a [website](#) with information on everything from home insurance to where to eat. There is also a [Facebook page](#) with useful information for international students. You can also contact LiTH International, which works specifically for international students at the Faculty of Science and Engineering. They are a resource and help during your entire study time at LiU. They can help exchange students with study-related questions.

Contact

Email LiTH International: incoming@lith.liu.se

Life at campus

Linköping University consists of multiple campuses across three cities. There are two campuses in Linköping; LiUs main campus called Campus Valla and the one at the hospital called Campus US. Campus US is where most courses in medicine, healthcare and other subjects adjacent to medicine are held.

Campus Norrköping is, as the name suggests, located in Norrköping. As a student at LiU you can travel for free between campus US, Valla and Norrköping with the campus bus “[Campusbussen](#)”. All you need to do is blip your LiU card. Note that if you do not have an active LiU card, you will have to take another form of public transportation.

Finding your way

Linköping University consists of multiple campuses in three different cities. Regardless of which campus you will spend most of your time at, the general idea for finding your way around campus is the same: You download a [map of campuses](#). If you need to find specific rooms, you can also use the [search function](#) to quickly find your way. We suggest saving this site as a shortcut, as it will be frequently used. It is also possible to google the name of the room and add LiU, for example “R23 LiU”, to find a detailed description on how to get there. Click on the speaker bubbles to find the floor plan of the buildings. Good to know is that “floor 2” is equivalent to ground floor in almost all buildings.

Lunchtime

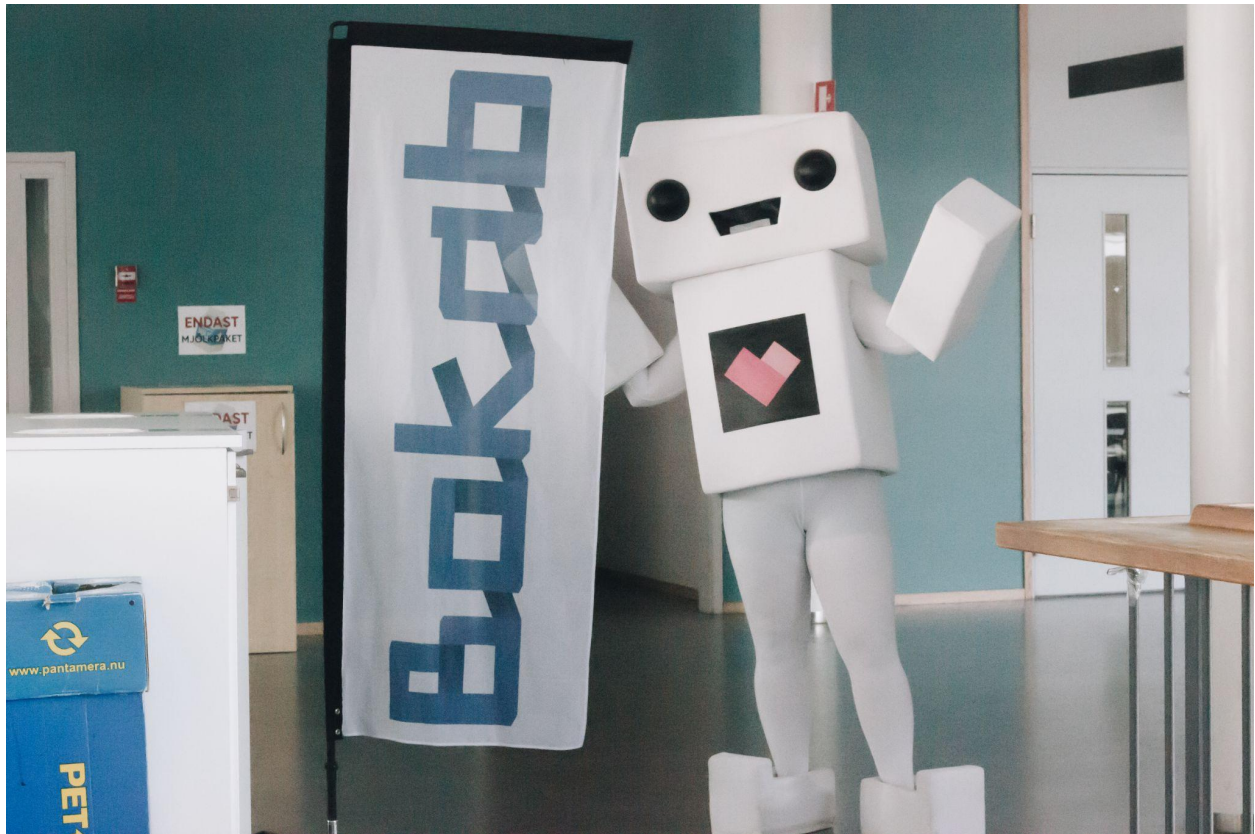
Students have a lunch break between 12:00 and 13:15. There are several restaurants and cafes on or close to the campuses but no one is very cheap. The price to buy lunch at campus is around 100-150 kr. The option to bring your own lunch in a lunchbox is therefore the most common one among students. There are several student kitchens with plenty of microwaves where the food can be heated. Due to the high demand on microwaves the queues to heat your lunchbox can be enormous right after classes at 12. You can find a list of student kitchens if you log in to the student intranet then click on “Campus and premises” and then “Eat and fika”.

Studying at Campus

There are various study spots scattered all over campus. As a student it is also possible to book study rooms if you need a more quiet spot for group work, or simply for yourself. You can book these rooms 2 days in advance through the [intranet](#).

There are also silent rooms if you need silence or if you are seeking meditation or prayer. On campus Valla you will find this in House B, entrance 21, floor 2 (Room 221:223). On campus Norrköping the location of this room is Kopparhammaren 2, floor 1 (room 1111). You can enter using your LiU-card and personal code weekdays between 7 a.m. to 9 p.m or on Saturdays between 7am and 3pm.

BokAB: Purchasing course literature



If you need to buy course literature, you can do so by visiting Bokakademin (Bokab). It is located on campus Valla, Kårallen and opens a temporary store on campus Norrköping at the start of each study period. Bokab sells course literature as well as stationery and school supplies you may need during their studies. You will find most of the course literature, and the staff can answer questions about literature for a specific course. They also have digital textbooks that you can rent or buy on their web shop.

See the opening hours on their [website](#).

Transportation to and from campus

Regardless of the city you will live in, they are walkable, bikeable and have a good public transportation system.

By Foot

You can rather easily get around the city by foot. In winter, it is recommended to use reflexes when it gets dark, even if the path has lights.

By Bike

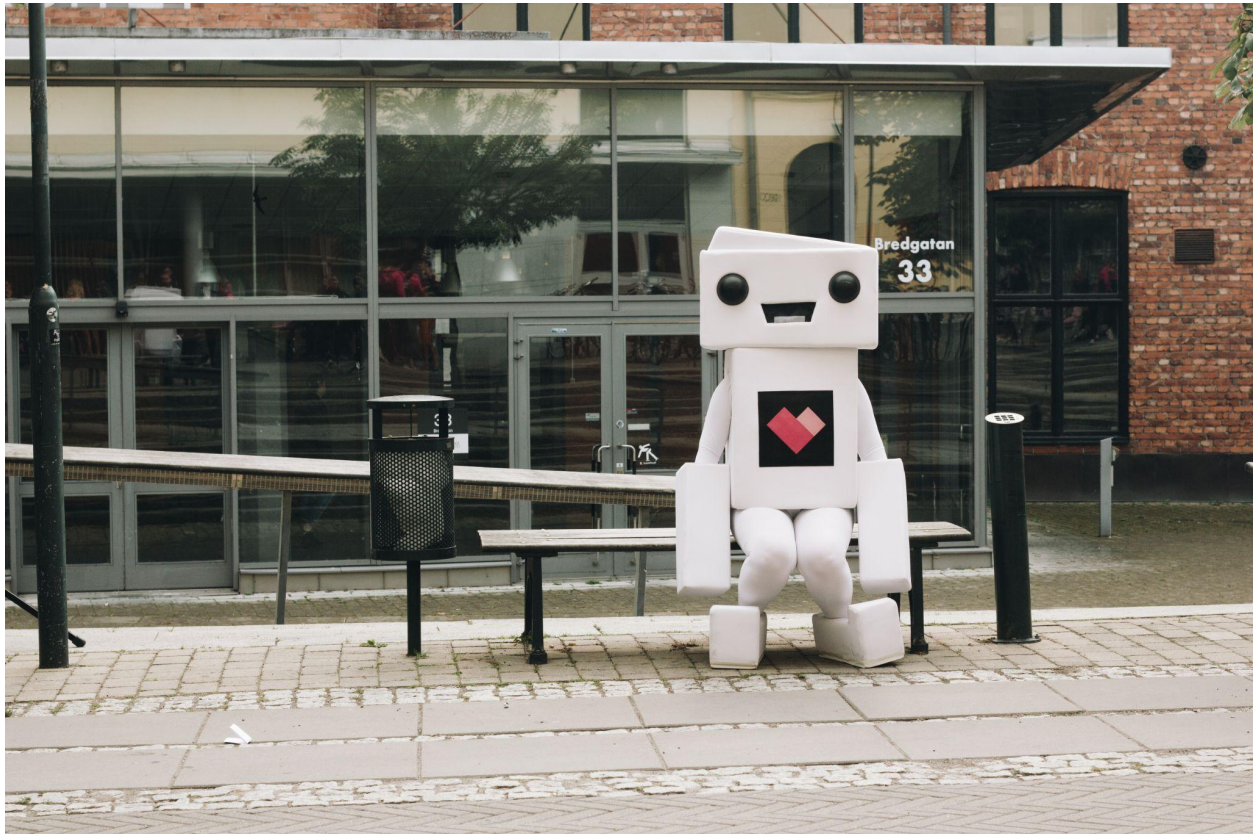
In Linköping, students bike all year round and biking is most students' choice of transportation. Sadly there are a lot of bicycle thefts, get a good lock and remember to use it. Since the campus in Norrköping, as well as the student residential areas, are in the city centre, biking is not as common in Norrköping.

By law, your bicycle needs to be equipped with a bell and a brake, as well as reflectors and a light if you bike in the dark. You will need to have a red rear reflector and a white front one, as well as pedal reflectors. There needs to be a white light pointing straight forward and one red one pointing straight back. Lights can be purchased at regular grocery stores.

Some students park their bikes rather badly on campus. This can easily make the roads impassable, so make sure you park it in a bicycle rack or away from entrances and walkways, so it doesn't prohibit accessibility to the buildings. You should also bike on the right side of the road.



By Public Transportation



Linköping and Norrköping are both located within Östergötland county. This has led to the cities using the same public transportation network: Östgötatrafiken. Östgötatrafiken runs most buses within the county as well as a train that goes between the cities. The easiest way to buy a ticket is to download the app *Östgötatrafiken* and purchase a ticket through the app. You can purchase a student ticket for a reduced fare, so long as you have a valid student card (for instance *Mecenat*, *ISIC*, *Studentkortet*). You can also use your bankcard to buy a ticket on the bus, but in this case you may not be able to buy a reduced fare ticket. **Do note that in Sweden they generally do not accept cash on the buses or trains.**

Campusbussen

If you're travelling between Linköping and Norrköping during a weekday we suggest using the Campus Bus called Campusbussen, read more in the beginning of the chapter [Life at campus](#). The bus goes between the three campuses during weekdays and is free for all students. Read more about the bus on the [intranet](#).

Popular and useful locations

Linköping University has a culture of students engaging in associations that organise activities or large projects. This has also led to a lot of student associations that run pubs, shops, cafés or similar.

In Linköping

There are many places to visit in Linköping. A lot of them you will find on campus Valla, and a few are spread out in the rest of the city, typically close to student residential areas. Some examples of these are listed below.

Kårallen

The student union building Kårallen is in the middle of the campus Valla in Linköping. Here you will find the offices of the students working for LinTek and many student associations, meeting rooms, a restaurant, a student cafe and other facilities. Kårallen transforms into a party venue some evenings where many of the student life's biggest parties are arranged every year.

Baljan

On the bottom floor of Kårallen you can find *Baljan* (Swedish for a large bucket). Sektionscafé Baljan is a student-driven non-profit organisation that aims to provide students with coffee, snacks, and treats (mostly “fika”) at reasonable prices. They are open 8 am - 4.15 pm on weekdays. If you want to be able to skip the queue for coffee, you can buy a coffee card and be able to use your LiU card to pay for the cup.

Unicrew

On the first floor of Kårallen you can find a shop run by a student association that sells various products (clothes, water bottles etc.) with the liu-logo on them. The shop also sells patches for the student overall. They are open Tuesday to Friday between the hours of 10-14.15.

You can see their products on their [website here](#).

Studenthuset

Studenthuset is the large red building located in the middle of Campus Valla. In this building you will find the library at the bottom floor (below the entrance floor), a lot of study places, computers and the information desk.

Byttan

Driven by the same student-organisation as the one that runs [Baljan](#), Byttan is a student-café located on the entrance floor in Studenthuset. They are open 8 am - 4.15 pm on weekdays. If you want to be

able to skip the queue for coffee, you can buy a coffee card and be able to use your LiU card to pay for the cup. The same system works for both places.

LiU Student Second Hand

In the basement of house A, entrance 19, you can find a second hand shop driven by students. You can find both small objects, such as cutlery, and large pieces of furniture, as well as borrow a transport bike. They also arrange transport days a few times per semester when they deliver the furniture to you in exchange for a small fee. They are open Mondays and Thursdays around lunchtime and Thursday evenings. You can read more on their [website](#).

They are also the perfect place to donate things when you want to get rid of things that are still in a good shape!

Flamman

Flamman Pub and Disco is a pub and nightclub open for students at Linköping University. They are located at the student housing area [Flamman](#) which consist of apartments and corridors.

Wednesdays they offer live music, stand-up or quizzes while you can devour a hamburger and drink some beer. On Fridays and Saturdays, the basement of the residence turns into a nightclub where students come together to dance and sing their hearts out to [Angels by Robbie Williams](#) as the last song of the night.

Visit address: Västanågatan 22, Linköping

Website: www.flamman.org

VilleValla

VilleValla is a student pub located in the student housing area [Irrblosset](#). At VilleValla you can enjoy an evening with food, board games and a great variety of beer. They have more than 100 kinds of beer and a tap system with 20 beer taps.

Visit address: Vallavägen 4C, Linköping

Website: www.villevallapub.se/english

Kårhuset Kollektivet

Kårhuset Kollektivet, or KK for short, is a student union building located in central Linköping. KK has study places, a restaurant, pub, outdoor seating and space for various student parties, events, and conferences. At KK there is also a theatre called Forumteatern, where student performances known as “[spex](#)” are performed.

Visit address: Ågatan 55, Linköping

Website: www.karhusetkollektivet.se

Örat

In the student union building Örat at Campus US, you will find the office of the student union Consensus. During daytime you will find Café Örat here, and during the evenings Örat is occasionally used for pub events. Örat can also be booked by students.

Visit address: Entrance 73 (US-area), Linköping

Website: www.orat.nu

Ryds Herrgård [hg]

In the middle of Ryd, you will find a classical mansion known as Ryds herrgård, abbreviated [hg]. [hg] has been a Student Union building for over 50 years. You will find study spaces with free coffee, conference rooms and language cafés during the day. At night (mostly weekends) the house is transformed into a pub and nightclub.

Visit address: Alsättersgatan 19, Linköping (Ryd)

Website: www.hg.se

In Norrköping

As Campus Norrköping is located near the city centre, there are a lot of options for students that are looking for something to buy or do. In this handbook you can find a few of the popular places which are all run by students.

Trappan

Trappan is the Student Union building at Campus Norrköping. Here you find study places and, amongst other things, pub events, parties, live shows, quizzes and catering of food, coffee and fika.

Visit address: Kungsgatan 40, campus Norrköping

Website: www.trappan.nu

Studentfiket

Studentfiket is a student-driven café located on the 5th floor of Trappan. At this café you can buy cheap coffee and tea, as well as an assortment of sweets and beverages. You can also rent extension cables if you need it during the day.

Visit address: Bredgatan 52, campus Norrköping

Website: <https://www.studentfiket.com/>

Pub Vattentornet

Pub Vattentornet is a student pub located in an old water tower. At Pub Vattentornet you can enjoy an evening with food, board games and a great variety of beer.

Visit address: Lennings gata 2, Norrköping

Website: www.vattentor.net/

Student Life

Every University has their traditions and activities. This chapter explains some of the traditions and how the engagement among students works here at LiU.

The Chapters of the Faculty of Science and Engineering

Every programme student is assigned to a student chapter through their study programme. A chapter is an association that strives to make student life as good as possible for the students it

represents. In collaboration with LinTek, the sections arrange a welcome period for the new students and throughout the year, they arrange parties and pubs as well as industry and commerce events for the section members. They also monitor the study environment and programs that the section represents.

Membership in the sections is voluntary but is a good opportunity to get to know students that study the same subjects as you and learn a lot through the engagement in the section.

Chapter	Represents programmes	Webpage	Social Media
D	MSc. in Computer Science MSc. in Cybersecurity	D-sektionens.se General questions: info@d-sektionens.se	Facebook: Datateknologsektionen Instagram: @dsektionen
I	MSc. in Industrial Engineering and Management	Website: www.i-portalen.se General questions: styret@isektionen.se	Facebook: Industriell ekonomi Instagram: @isektionen_liu
Logistik	MSc. in Intelligent Transport Systems and Logistics	Website: https://logistiksektionen.se/ General questions: info@logistiksektionen.se	Facebook: Logistiksektionen Instagram: @logistiksektionen
M	MSc. in Aeronautical Engineering MSc. in Design MSc. in Mechanical Engineering MSc. in Sustainability Engineering and Management	Website: www.maskinteknologsektionen.se General questions: styret@maskinteknologsektionen.se	Facebook page: Maskinteknologsektionen Instagram: @maskinteknologsektionen_liu/
MatNat	MSc. in Applied Ethology and Animal Biology MSc. in Chemistry MSc. in Ecology and the Environment MSc. in Mathematics	Website: www.matnat.se General questions: styrv@matnat.se	Facebook: MatNat-sektionen Instagram: @matnatsektionen

N	MSc. in Digital Construction Management	Webpage: https://n-sektionen.se/ General questions: info-web@n.lintek.liu.se	Facebook: N-sektionen Instagram: @nsektionen
TBi	MSc. in Protein Science	Website: www.tbisektionen.com General questions: info@tbi.lintek.liu.se	Facebook: TBi-sektionen Instagram: @tbisektionen
Y	MSc. in Biomedical Engineering MSc. in Communications Systems MSc. in Electrical Engineering	Website: www.ysektionen.se Questions: ordforande@ysektionen.se	Facebook: Y-sektionen Instagram: @ysektionen

Note that the Swedish name for chapter i *Sektion* which is commonly mistranslated to *Section*. In this handbook we have used the word *chapter* but you may encounter *section* during your stay here.

The Overalls, “ovve”



The Overalls, called ovve, are the suits of the students at LiU and some other universities. It consists of an overall where you tie the sleeves around your waste. Each chapter has an overall in a specific colour which marks it easy to see what the student is studying. Exchange students can buy an overall from ESN, which is in a blue colour. At LiU, it is a tradition that students wear overalls during the welcome periods and at parties known as “kravaller”.

Students tend to personalise the overall as much as possible. It is therefore custom to add your name on one of the legs and add patches from different events and parties that you attend, as well as fun patches, on the other leg. You can buy patches at LiU Store in Kårallen or from the party

committees. Your section should have patches for sale, and you can get a LinTek patch from us at LinTek! Here is a picture guide of the colours of the different sections and the ESN overall.

Student associations

There are a lot of student associations at Linköping University. These can be anything from a student orchestra to running a café to working on building a racing car. You can find a full list of the student associations on studentlivet.se. Below, the student association specifically aimed for international students are presented, although the students involved in the association are not seldom from Sweden.

Note that most of the other student associations are open for international or exchange students as well. Just send them an email!

Erasmus Student Network

Exchange students can find themselves welcomed by the Erasmus Student Network (ESN) in Linköping. ESN Linköping is a part of ESN, one of the largest student volunteer associations in Europe. Each term, they arrange potluck dinners, parties, sewing evenings, pubs, and various other events. Apart from these, they also organise trips to various must see places in Sweden and beyond.

By becoming a member of ESN Linköping, you will receive the ESN card through which you can get access to several bonuses. These include discounts at events and trips as well as discounts at ESN's international partner companies.

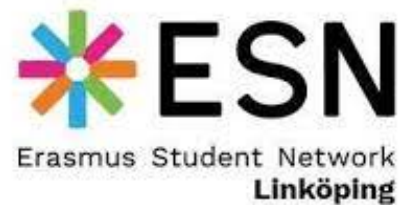
Contact

Website: esnlinkoping.org

Facebook: facebook.com/esnlinkoping

Instagram: [@esnlinkoping](https://instagram.com/@esnlinkoping)

Email, general questions: info@esnlinkoping.org



East Asian Association (EAA)

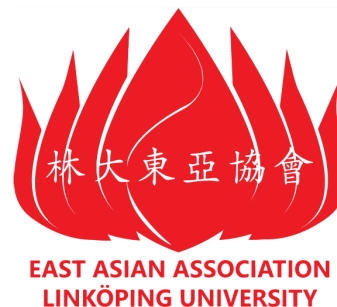
The East Asian Association (EAA), works with helping exchange students feel a part of the Swedish student life. The association regularly arranges language exchange events, referred to as conversation corners, that promote language exchange in Chinese, Japanese and Korean. They also host cultural activities, such as cooking and movie events, as well as two dinner parties every year.

Contact

Website: <https://eaaliu.se/>

Facebook: [East Asian Association at Linköping University](#)

Instagram: [@east_asian_association](#)



ISA - International Student Association

International Students Association, or ISA for short, works with organising activities for all international students at LiU. Along with their travel partners, they also organise several trips through beautiful Scandinavia so you can explore your new surroundings.

Contact

Website: www.isa.studorg.liu.se

Facebook: [ISA - International Students Association, Linköping](#)

Instagram: [@isalinkoping](#)



ISO - Indian Students Organization

ISO Linköping organises various cultural events and celebrates Indian festivities at LiU. They recruit members every operational year to give you all a wonderful cultural and traditional experience.

Contact

Facebook: [ISO - Indian Students Organization, Linköping](#)

Instagram: [@iso.liu](#)

Email: liu.indianstudentorganization@gmail.com



Health and Wellbeing



The students' well-being is of great importance for us. Here are some things connected to health and wellbeing.

Student Health

The Student Health is a centre owned by LiU, which offers support and advice on mental or physical health problems. They offer individual consultations, group activities, workshops and digital resources in preventative health care. If you have a disability, for example dyslexia, they can help with extra support, such as tools or a prolonged time during exams..

Please note that the Student Health Care is not a health centre for medical advice. For medical advice, please call 1177 for a free health service provided by the Swedish state or visit their [website](#).

Alcohol in Sweden

Alcohol laws are quite strict in Sweden and except for restaurants, bars and clubs, alcohol is sold only in the state-owned monopoly stores, **Systembolaget**. The minimum age for buying alcohol at Systembolaget is 20 years old. Light beer/cider can be bought in supermarkets. Be ready to show a valid photo ID. In bars and restaurants, the legal drinking age is 18 years old.

All types of narcotics are strictly forbidden in Sweden. Strict penalties apply for selling and using drugs.

Smoking

Smoking is forbidden in many public places in Sweden, i.e. at entrances, in restaurants, coffee shops, shopping centres, nightclubs, outdoor seating, train stations etc. Smoking indoors is never allowed or accepted.

Other good info

This chapter is for fun facts that may not be mentioned in other sources of information.

Pre-parties

In Sweden it is common to have a pre-party in someone's home before going out. This often involves hanging out, listening to music, dancing and drinking. Some may even say it is even more fun than actually going to the club afterwards.

Recycling

Sweden is a world-leader in recycling, and most homes and workplaces have recycling bins for different materials. Recycling bins are widely spread throughout the campuses of Linköping University.

Beverages in Sweden are often sold in deposit-paid bottles. You pay SEK 1 to 2 extra (called pant) for beverages in plastic or aluminium containers, which is returned when you return the bottle or can at a "pantstation" which is a machine that recycles and pays out a receipt for you to spend in the store hosting the machine (available at most grocery stores, for example Hemköp in Ryd).

Useful contact information

Here is a shortlist of telephone numbers to call and email addresses, in case you may need help with anything.

Emergencies: 112

Police (non-emergencies): 114 14

Medical advice (free): 1177

Campus Security: 013 - 28 58 88

LiU Information Center: 013 - 28 10 00

LinTek international: international@lintek.liu.se

LinTek Work environment: camo@lintek.liu.se

LinTek education: ua@lintek.liu.se

LinTek - Your buddy in your study!

This form is currently under construction and prone to be improved for the next semester (autumn 2023).

If you have any suggestions or input for our upcoming handbook, please fill in [this form](#) to help us improve the life of new international students.

